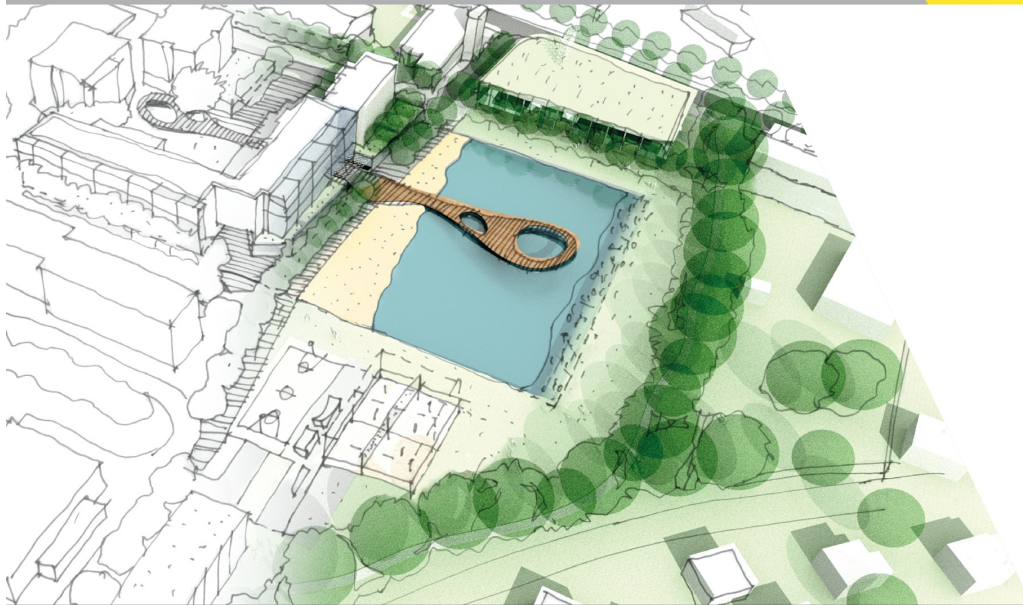


DEC **CONNECT** Award

Design a Riverside Facility

SCHEME FOR LEARNING



classofyourown®

Training
Qualifications UK
Inspire • Achieve • Succeed

Scheme for Learning

Design a Riverside Facility
DEC **CONNECT** Award

Lessons 1–2

GLH: 2

Learning Outcome C1

Describe construction project team roles and responsibilities

- Produce a list of people that work on a construction project
- Explain the key responsibilities of each role
- Appropriate use of language

Student Activity

Students produce a document that allocates roles related to different aspects of the facility design. This can be evidenced as a presentation or within a report and can include any combination of text, images and diagrams.

The students can consider the activities completed on a typical working day and essential skills needed for the role.

Teacher Guidance

Students can explore a range of professions, which may include the following roles: Architect, Architectural Technologist, Structural Engineer, Civil Engineer, Building Services Engineer, Facilities Manager, Interior Designer, Landscape Architect, Project Manager, Land Surveyor & Quantity Surveyor. A degree of guidance about these roles can be provided by the teacher or industry supporters.

KEY CONCEPT, *Related Concepts & Global Context*

- COMMUNITIES
- *Collaboration*
- *Perspective*
- *Fairness and development*

Resources

- Pens
- Paper
- IT Optional: Word/ PowerPoint

Framework Mapping (*English N/C D&T KS3 & IB MYP Design Year 3*)

Evaluate: Understand developments in design and technology, its impact on individuals, society and the environment, and the responsibilities of designers, engineers and technologists

Criterion A: *Inquiring and analysing* Aii. & Aiv.

classofyourown®