

A Home for Everyone design Challenge

Zuleikha Iqbal, Nora El-khamisy and Maisie Smith

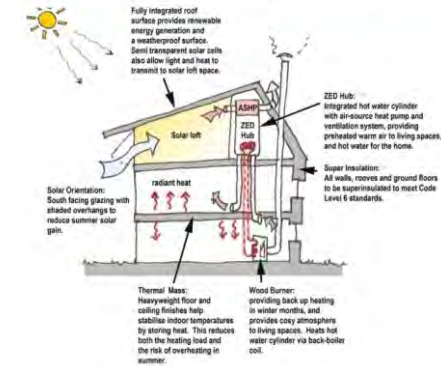
Inspiration

The following pictures and statements provided us with a rough sense of the needs in the country we live in, which allowed us to think of these when progressing with our ideas.



Housing crisis: more than 200,000 homes in England lie empty

WHAT MAKES ZERO BILLS ZERO CARBON

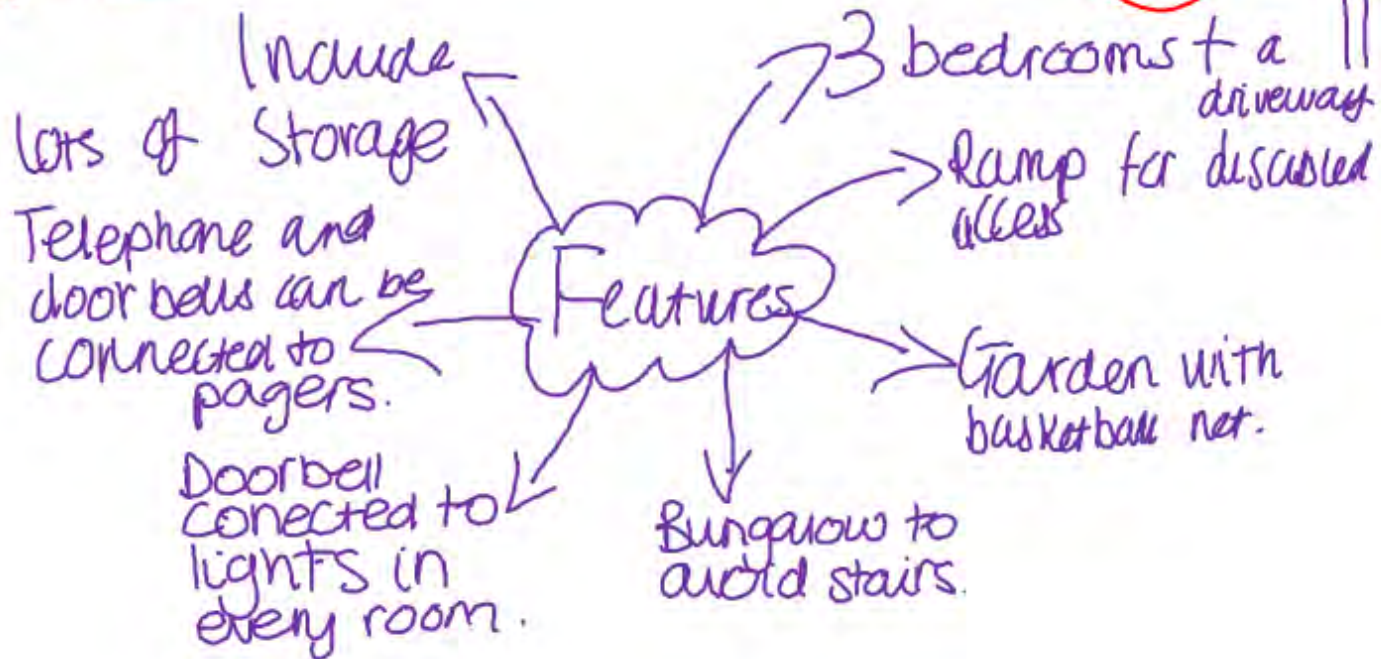
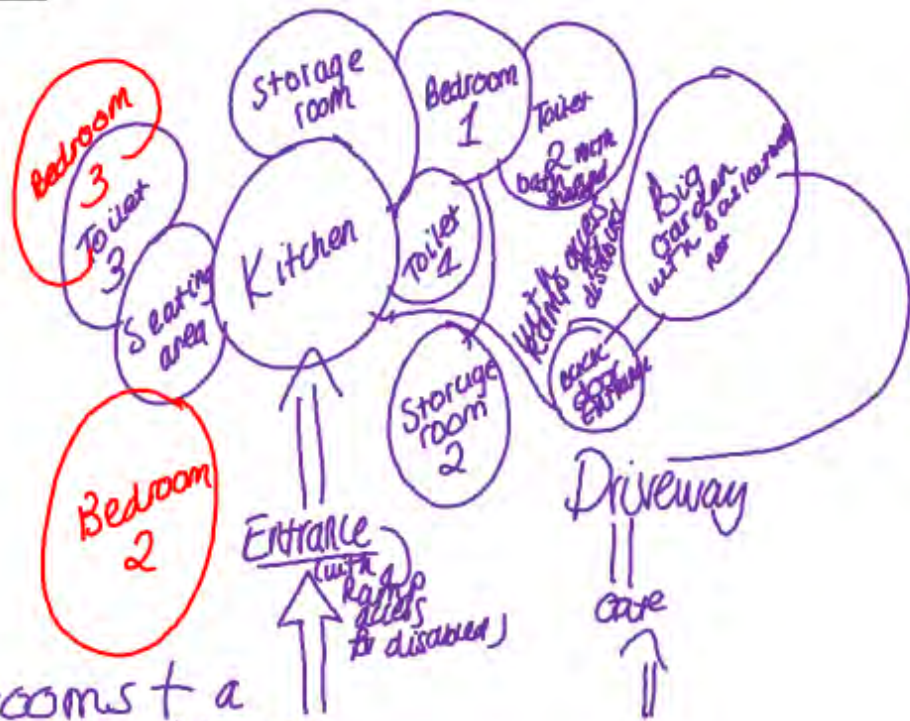
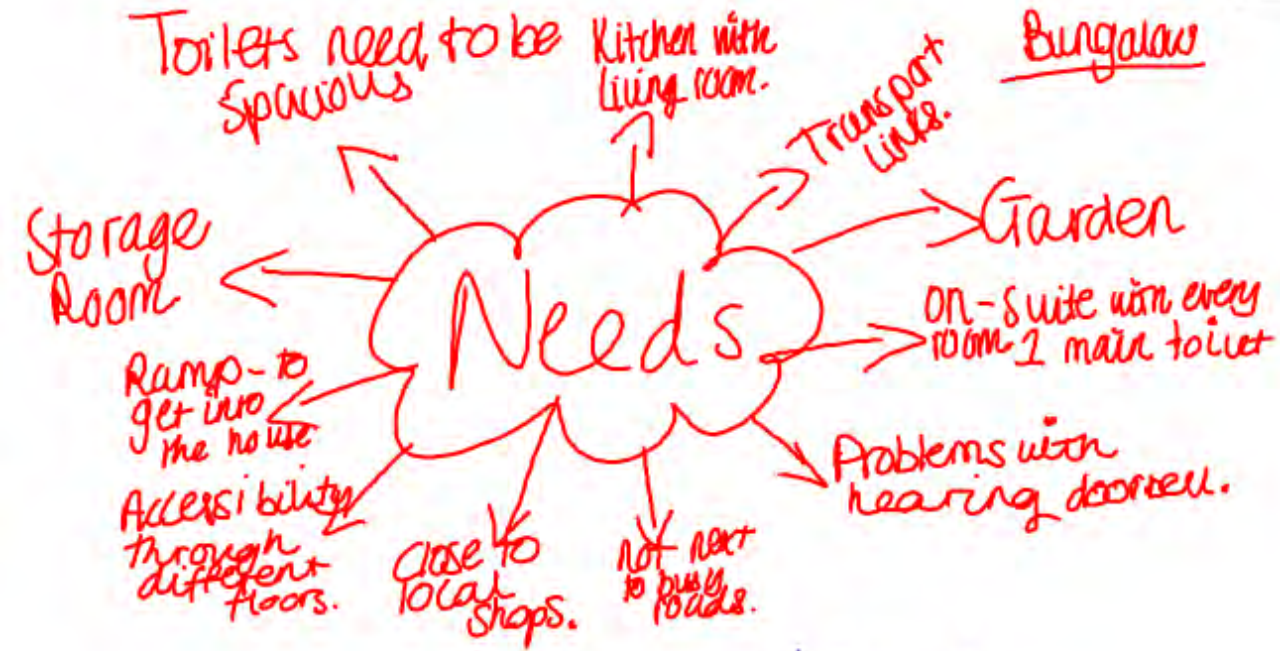


- 109,660 homes were built in England (128,000 across the UK) in 2013, which is less than half of the 250,000 homes we need every year to meet demand

If there is one thing that revolutionary communists and bankers can agree on, it is that there is a housing crisis in Britain. There are too few homes, usually costing too much, often in the wrong places, and often of poor quality. The crisis damages lives, breaks up families, blights employment prospects, reduces mobility and slows the economy.

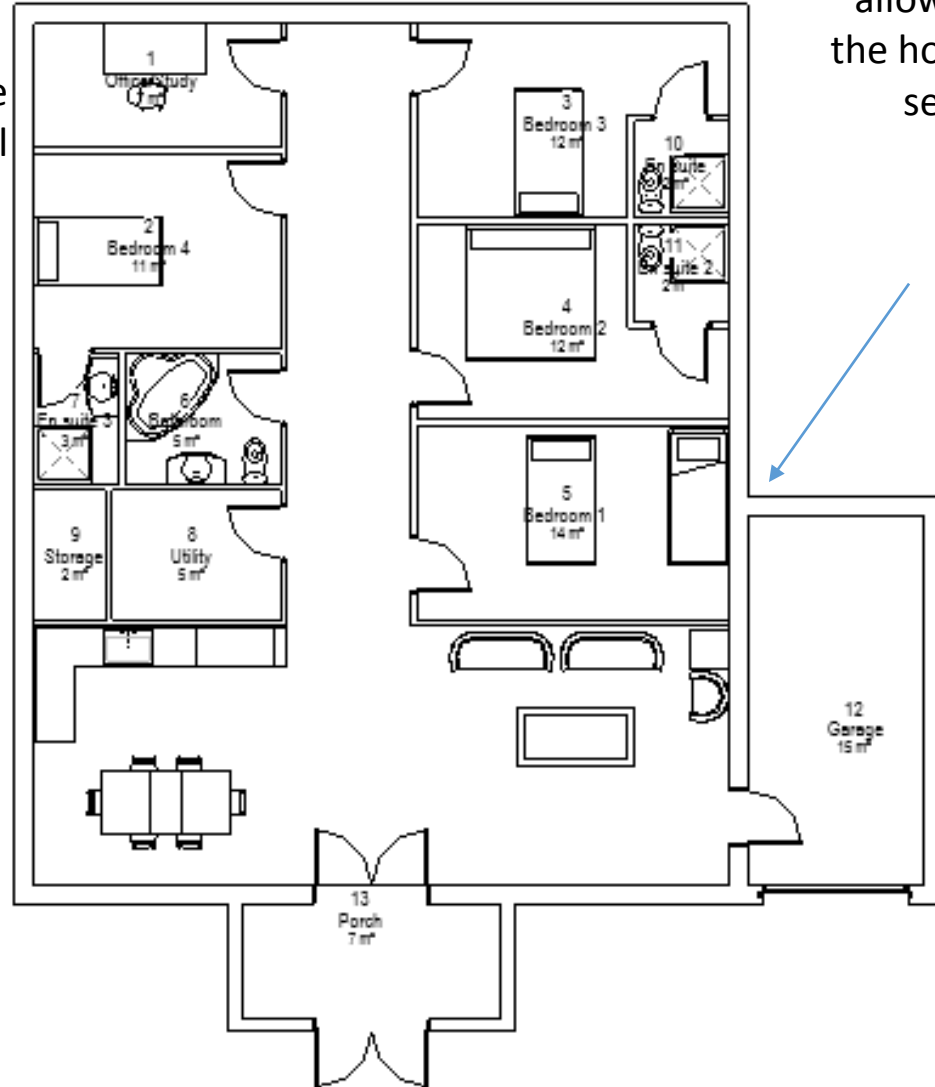
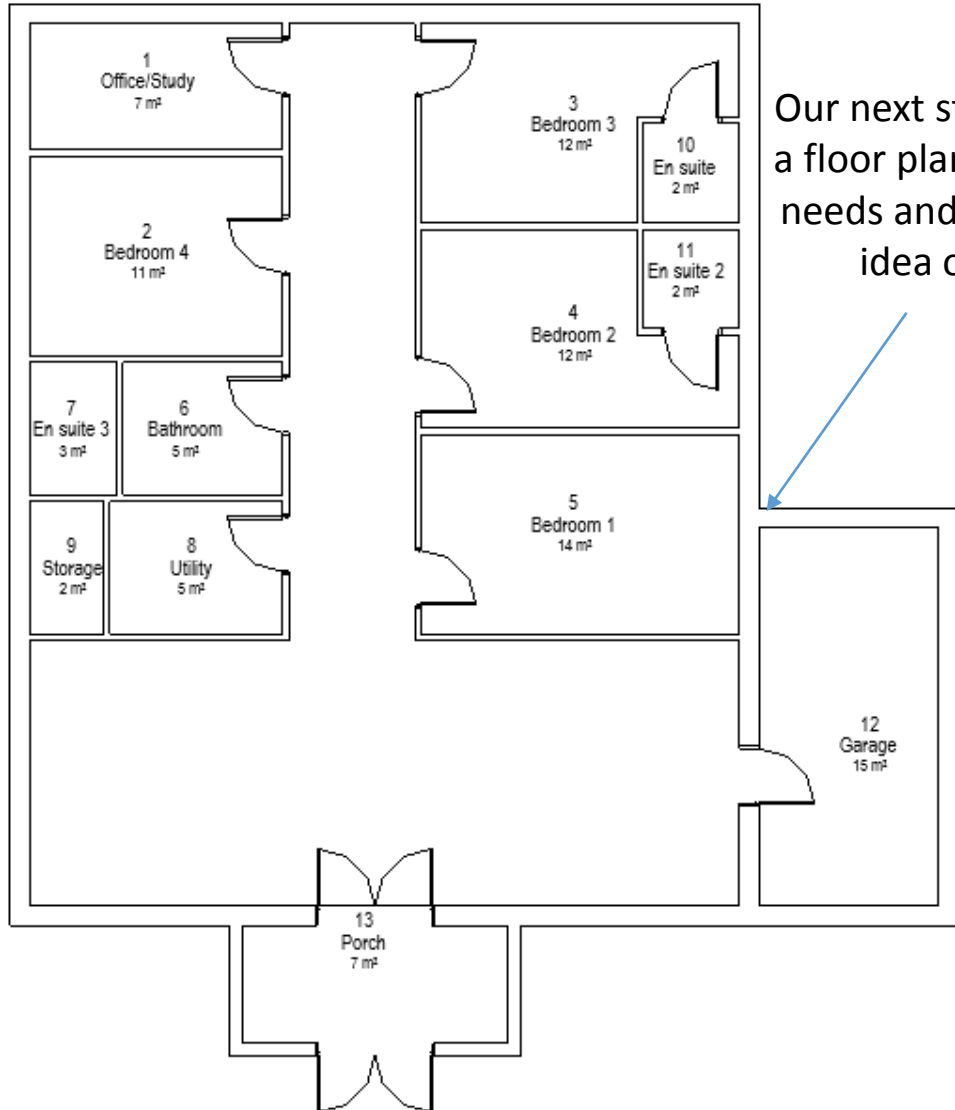


Initial ideas



Revit floor plan

This is our floor plan with the furniture included. The furniture allows us to visualise the house and gives it a sense of space.





Flat garden to allow easy access for the disabled. The driveway allows two cars to be parked which is suitable for the family of 6 if they get visitors frequently.

An outdoor seating area for the residents in the building provides a great place to relax and enjoy nature.

The house is a bungalow which means that there are no stairs. This makes it convenient for the elderly couple and anyone with mobility issues, as it means that they won't have to travel via stairs which makes it more accessible for them.

We have included trees and natural components to give a sense of nature and provide natural screening which makes it more private.

This garage will make it easier for the family of 6 as it means they can have more storage space.

Planters are included to create a natural barrier between the garden and the road.

For the materials we have used timber because it is a sustainable material. We have also used triple glazed glass to retain heat within the building and keep it nice and warm.



The grass gives it a more homely feeling and is a great space for children to play and is great for stress relief.



The colour of the doors contrast with the walls as this will help the visually impaired to differentiate between different parts of the building.

A green roof absorbs water and provides a nice scenery which fits in with the surrounding nature.

Multiple windows allows natural lighting to enter the building and reduce energy consumption costs.



An open plan kitchen/living/dining prevents the use of too many walls which would've made residents feel restricted. This also makes moving around the house a lot easier, especially for those with mobility restrictions.



Person	Challenges	Ideas/Solutions
Joseph and Freda	<ul style="list-style-type: none"> ❖ Joseph is very unstable and unable to walk on its feet ❖ He uses a frame to help him get around ❖ Joseph is a little deaf ❖ Freda suffers pain in the hip and incontinence 	<ul style="list-style-type: none"> ❖ The house is a bungalow which will make it easier for Joseph to get around the place ❖ There is a lot of space which also makes it very accessible ❖ We have the doorbell connected to pagers so that he can hear the bell when it rings ❖ We have several bathrooms which will hopefully help Freda with the incontinence ❖ The house is a bungalow which means that she won't have to travel upstairs to the bathroom
Tom	<ul style="list-style-type: none"> ❖ He uses a wheelchair to get around in ❖ Not enough space in the kitchen ❖ Same house he lived in before the incident 	<ul style="list-style-type: none"> ❖ We have a lot of space where there is no furniture which will make it accessible for him ❖ The kitchen is an open kitchen with a dining and a living room which will make it really easy for him to get around in ❖ The house is a totally new house which will make him not remember about the incident as much and will be a new environment for him to explore
Sophie	<ul style="list-style-type: none"> ❖ Sophie is visually impaired from birth ❖ Things being left out on the floor make it harder for her to get around ❖ She likes to play outside in the garden with her friends 	<ul style="list-style-type: none"> ❖ The colour of the doors contrasts with the colour of the walls which might help her to see around a little bit ❖ There is a storage area which will make it easier for her brother to put his things in there so that it will be more accessible for her ❖ The garden is big which will make it easier for her and her friends to play in and also has included 2 benches
Alysha	<ul style="list-style-type: none"> ❖ Thursdays are challenging for her because of the regular shopping day ❖ Needs more storage space ❖ Granny lives with the family and has dementia ❖ Worries that the house isn't suitable for her 	<ul style="list-style-type: none"> ❖ She can have somebody to look after the kids because there is enough space for 2 cars to be parked in the front ❖ We have a storage room which will provide more storage space for her ❖ The house is accessible for granny as it is 1 storey ❖ The house is suitable for her as it is 1 storey and has a big outdoor garden for her to get fresh air